

Remote Stand / Remote Box

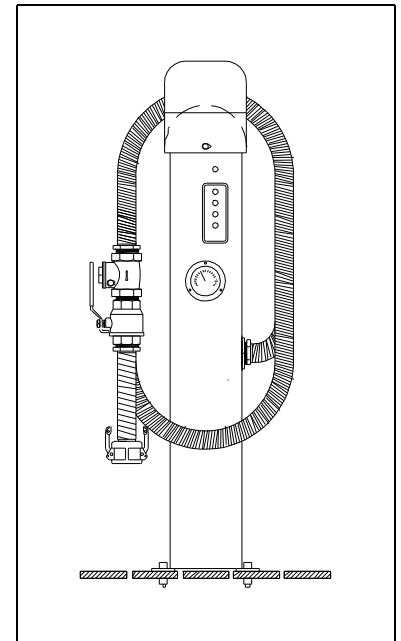
Remote Stand:

Remote stands offer the possibility to place the pump away from the dock to almost any location in the marina. Multiple remote stands (=intake points) can be served with only one pump. Remote stand includes vacuum gauge and can be used as hose hanger. Hot dipped galvanized (grey zinc finish).

Version	Part#	For Models	Comment
Remote stand with vacuum gauge & electric controls	RS-A	AVR, LD, & CHR models	Pump can be monitored and operated from the remote stand
Remote stand with vacuum gauge, electric controls & mot. valve	RS-B	AVR, LD, & CHR models	For use with optional token / coin box, \$-bill validator, or card reader
Remote stand with vacuum gauge, (no electric controls (part# RS-C)	RS-C	LD & CHR models	Only for use with automatically operated (=constant vacuum) models

Optional Equipment:

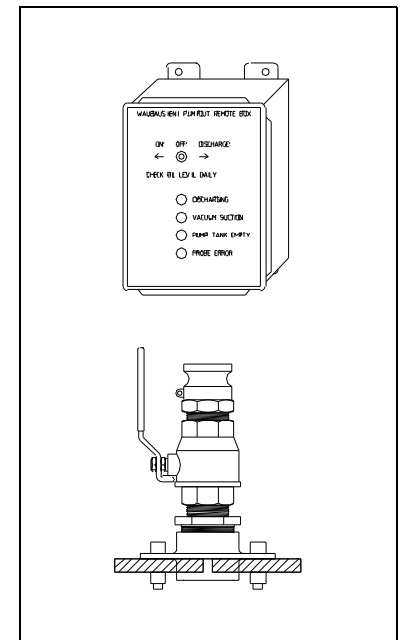
- x token or coin box
- x \$-bill validator
- x card reader



Remote Box:

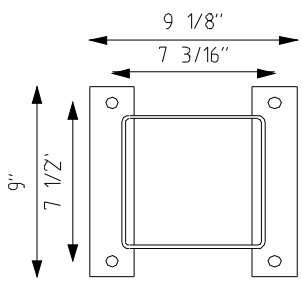
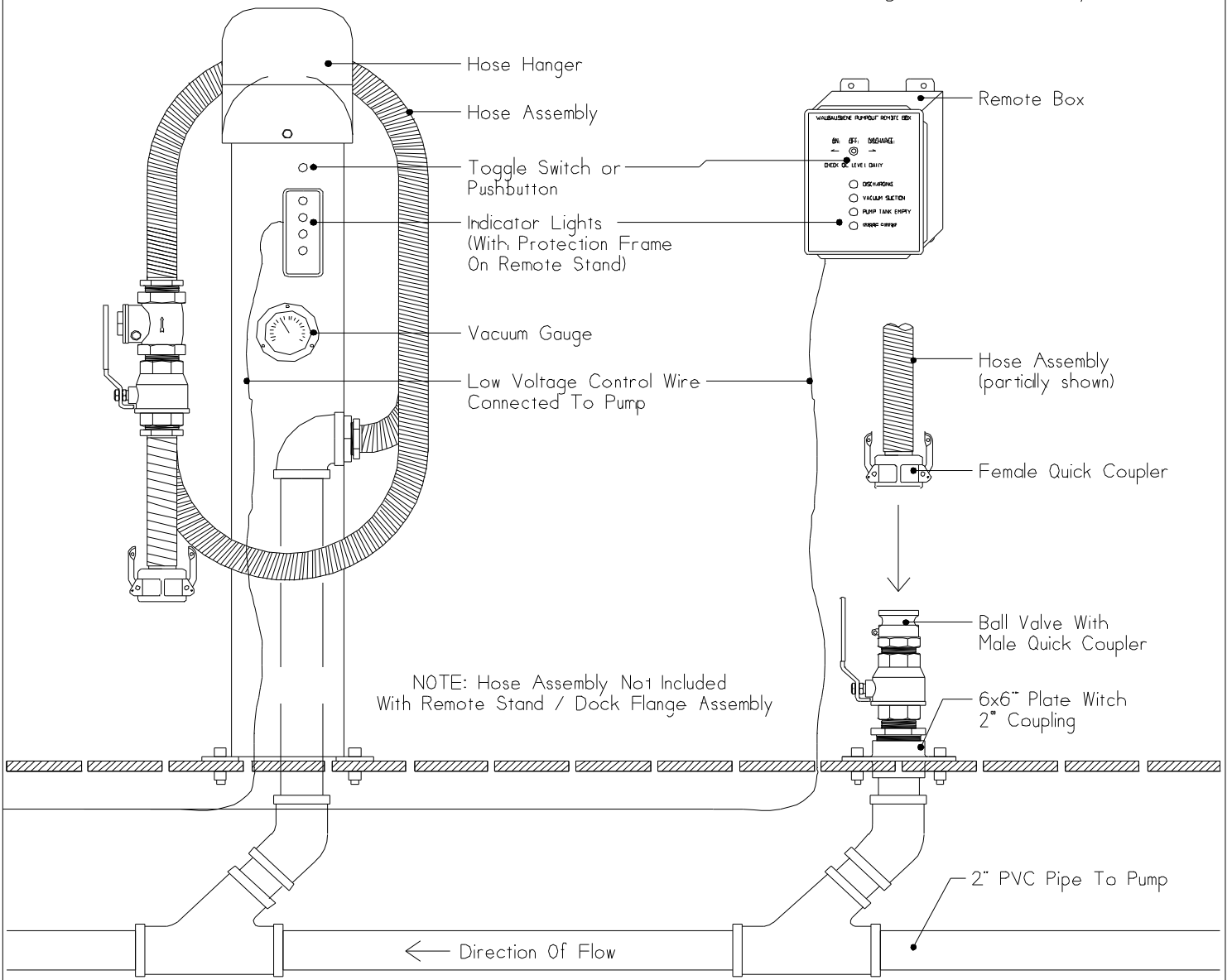
The remote box in combination with the dock flange assembly can be used as an alternative to the remote stand.

Description	Replaces	For Models	Comment
Remote box + dock flange assembly	RS-A	AVR, LD, & CHR models	Alternative to remote stand RS-A
Dock flange assembly	RS-C	LD & CHR models	Provides an outlet with ball valve & quick coupler for the hose
Remote box	---	AVR, LD, & CHR models	Can be used to operate the pump from an office etc.

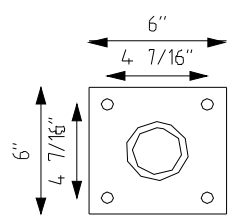


Remote Stand

Remote Box with Dock Flange Assembly



Footprint



WAUBAUSHENE MACHINE & WELDING BOX 99, 111 COLDWATER RD., WAUBAUSHENE ONTARIO, L0K 2C0, CANADA PHONE: (705) 538-1459 or (800) 663-1624 FAX: (705) 538-1776 WEB: WWW.WMWPUMP.COM	TITLE: INSTALLATION OF REMOTE STAND / REMOTE BOX WITH DOCK FLANG ASSEMBLY	
	DATE: April 04, 2006	DRAWING #: DOCK.VCD
	REVISED:	DRAWN BY: J.-O. H.